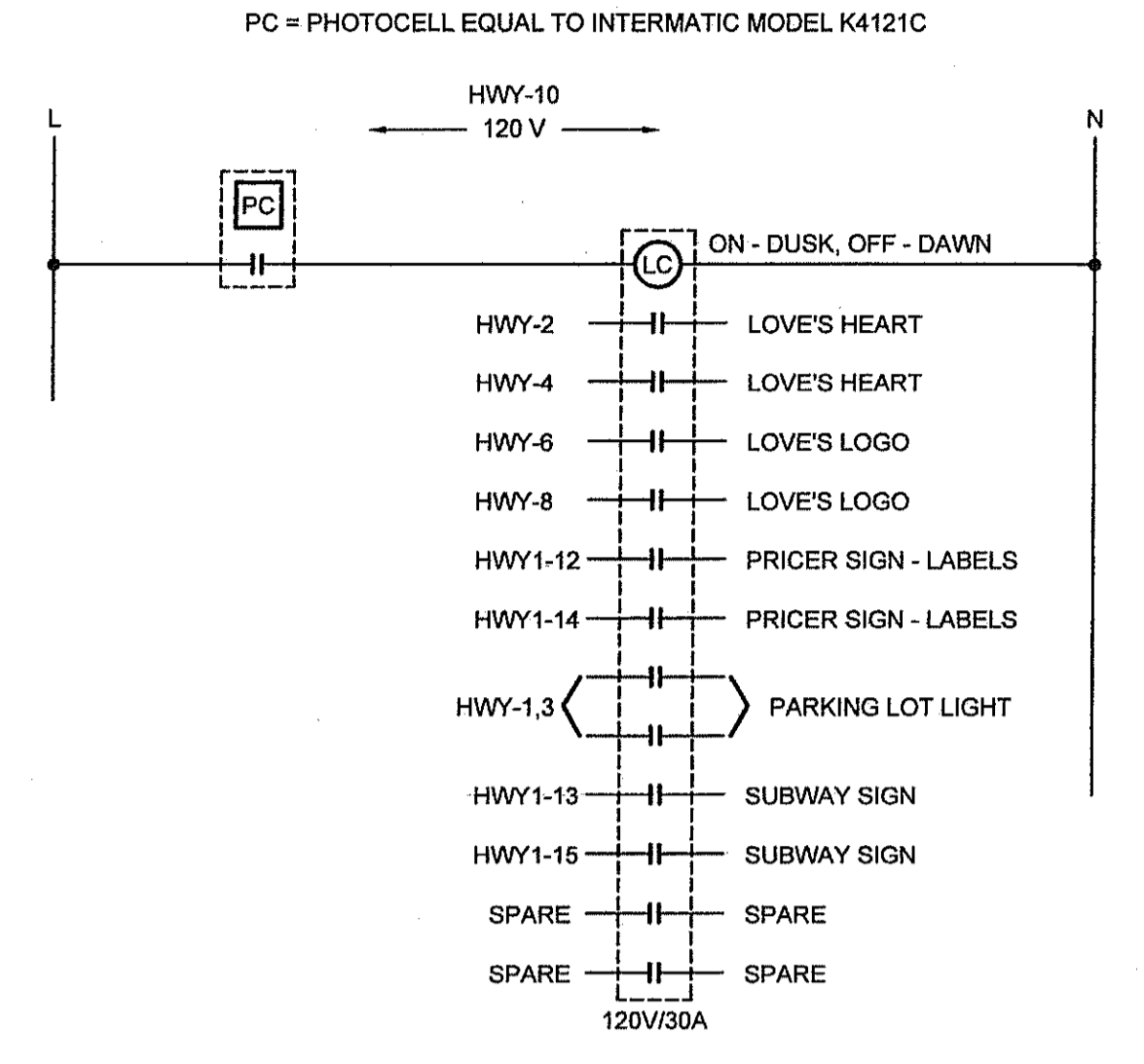
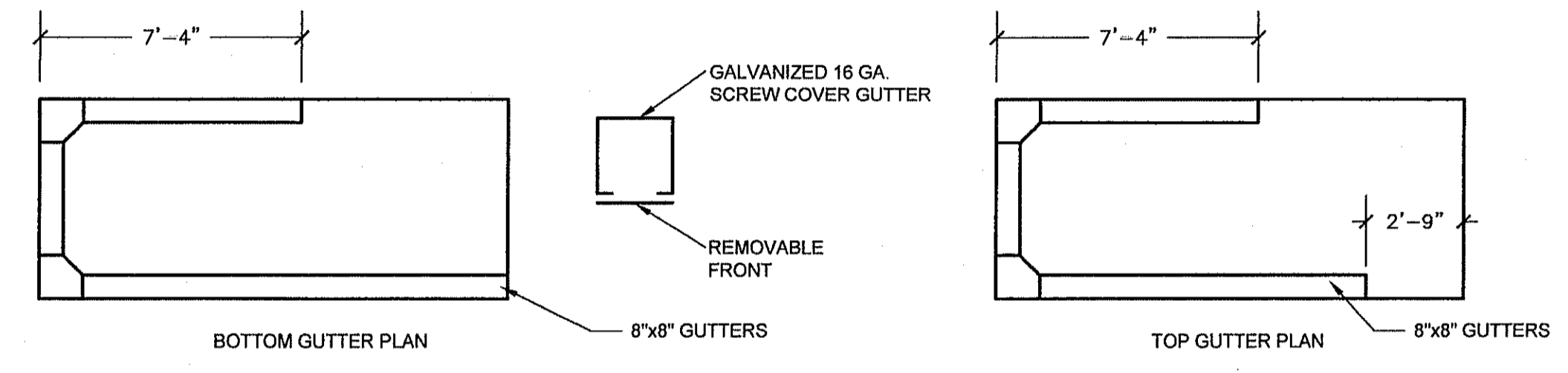


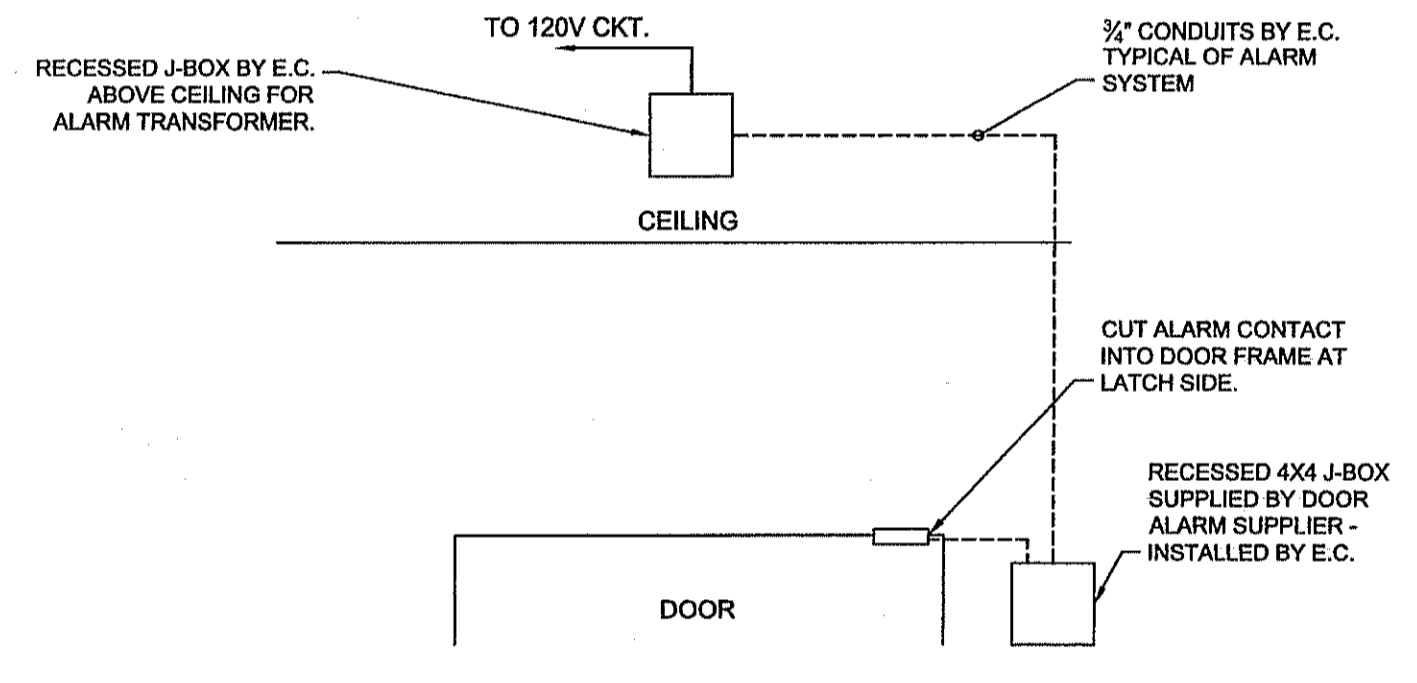
1 ELEVATION - ELECTRICAL ROOM
E-8.1/3/8" = 1'-0"



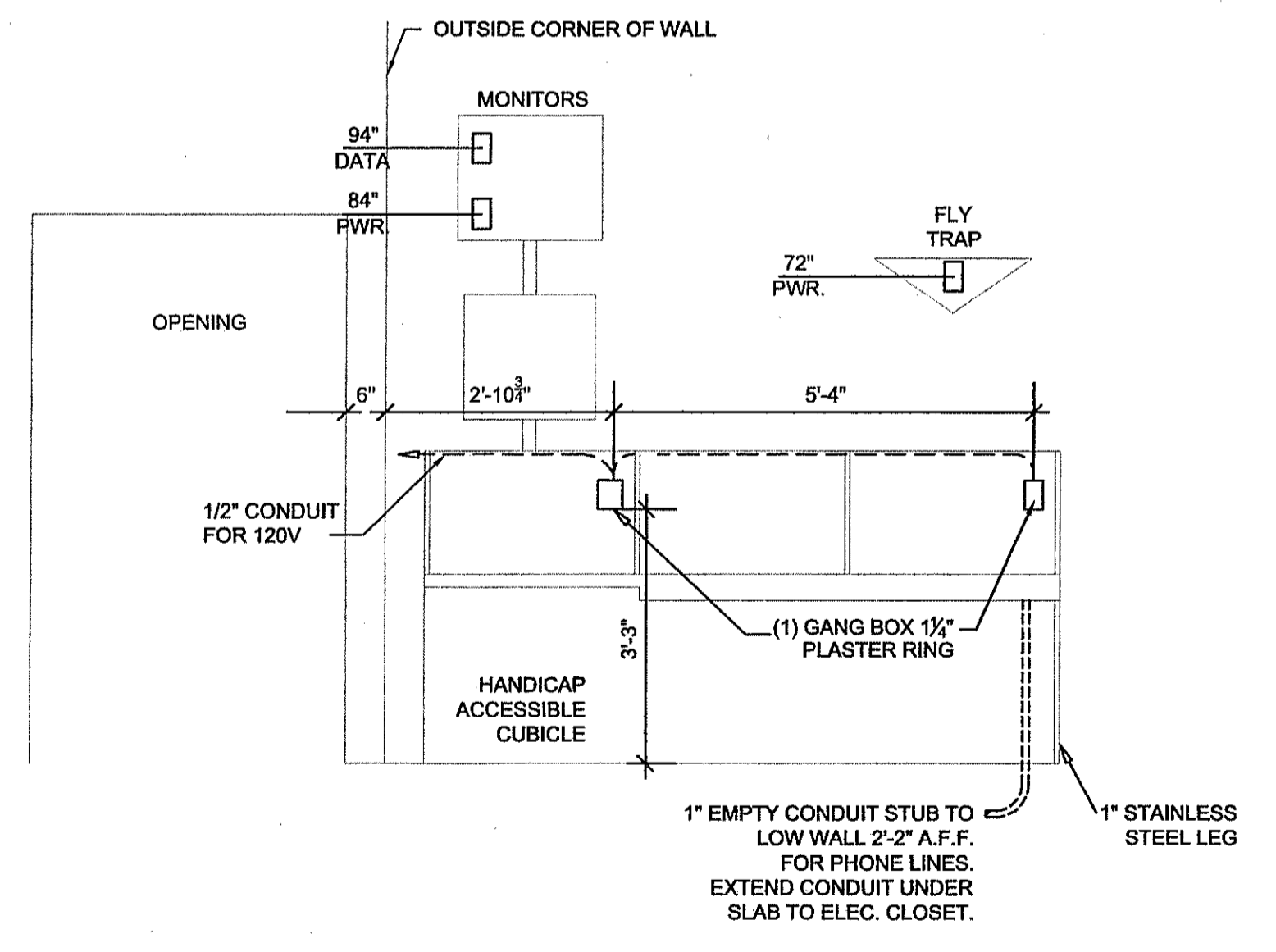
7 HIGH-RISE SIGN WIRING DETAIL
E-8.1/NTS



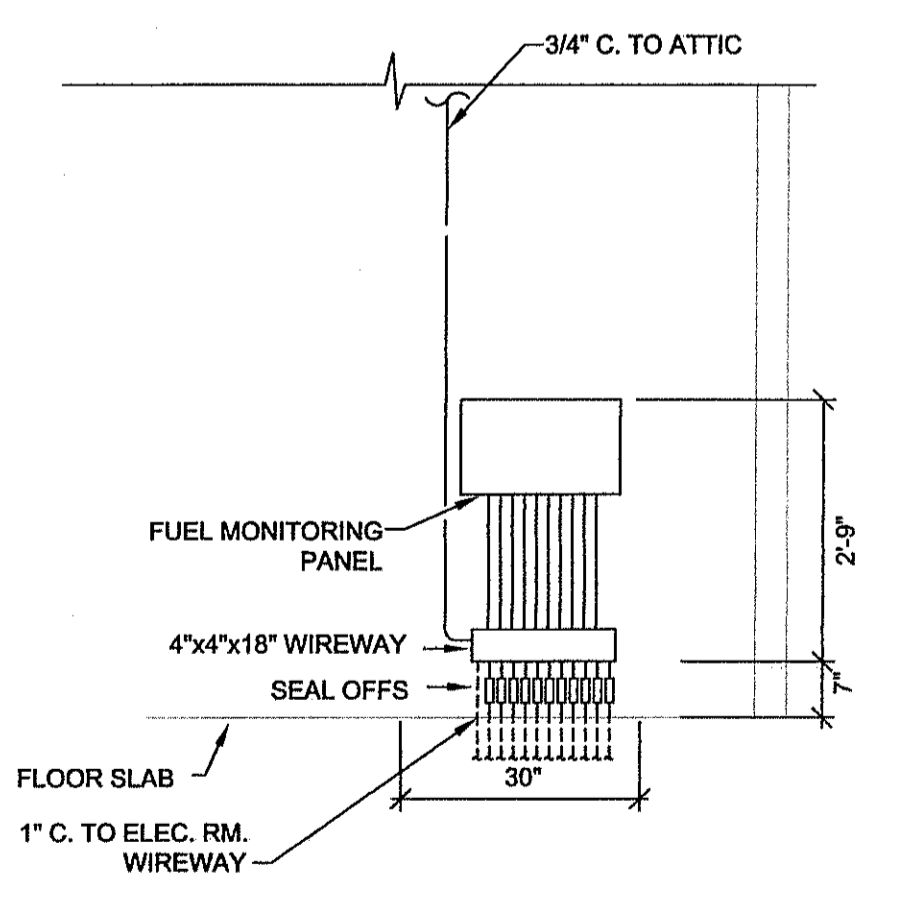
2 GUTTER PLAN - ELECTRICAL CLOSET
E-8.1/NTS



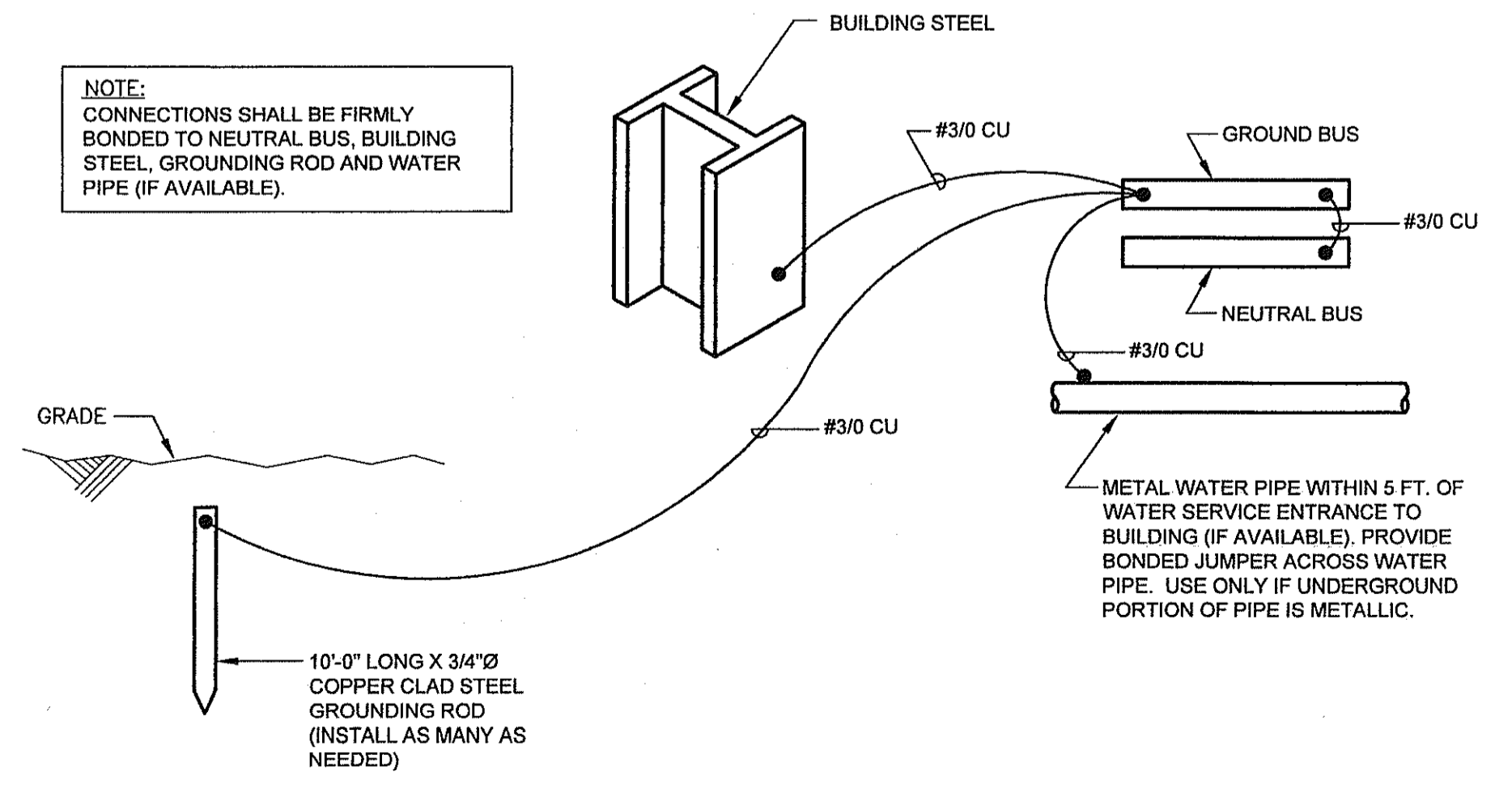
6 ALARM CONTACT INSTALLATION
E-8.1/NTS



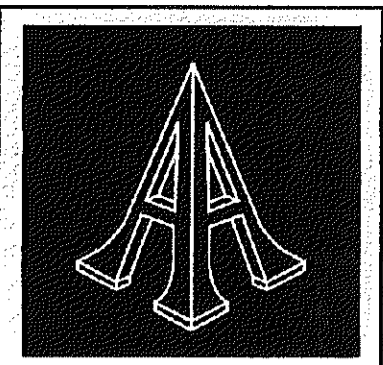
3 ELEVATION - PHONE LEDGE
E-8.1/1/2" = 1'-0"



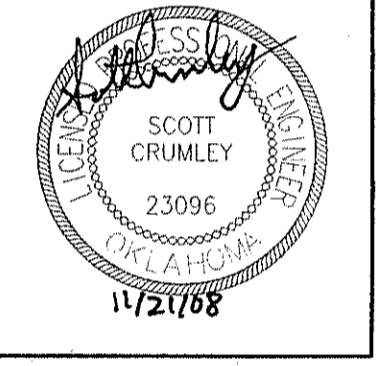
4 ELEVATION - FUEL MONITOR & OIL WATER PANEL
E-8.1/1/2" = 1'-0"



5 GROUNDING SYSTEM DETAIL
E-8.1/NTS



Pascal Aughtry & Associates, PC
405.463.3494
Fax 405.463.3493
6435 North Oile Avenue
Oklahoma City, OK 73116
pascalarch.com



A NEW TRAVEL STOP
STORE No. 46
HOOKER, OK

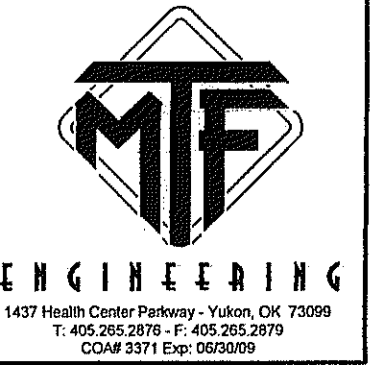
Love's
Travel Stops &
Country Stores

Revisions:

No.	Date

Project No.: LVS08026
Date: 10-13-08
Sheet No.:

E-8.1
Sheet of



ENGINEERING
1437 Health Center Parkway - Tulsa, OK 74109
T: 405.265.2879 - F: 405.265.2879
COWI 3371 Eng. 0000099